



INFLUENCE OF THE TYPE OF THE BREEDING COLONIES ON THE YIELDS OF ROYAL JELLY IN THE REGION OF KUMANOVO IN MACEDONIA

Dzimrevska Irena¹, Kiprijanovska Hrisula²

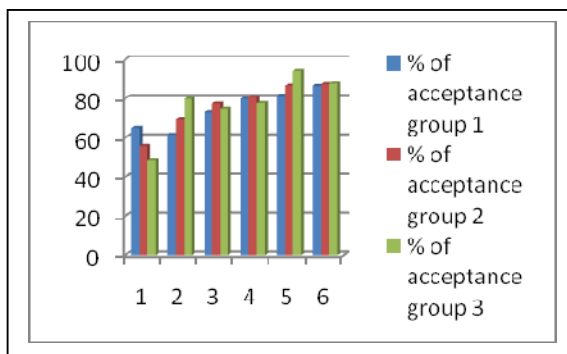
1 Faculty of Agricultural Sciences and Food, Skopje, Republic of Macedonia, bul. Aleksandar Makedonski bb, Skopje, Makedonija, Post Graduated Student e-mail: dzimrevska@yahoo.com

2 Faculty of Agricultural Sciences and Food, Skopje, Republic of Macedonia, bul. Aleksandar Makedonski bb, Skopje, Makedonija, Professor e-mail: hrisulak@yahoo.com

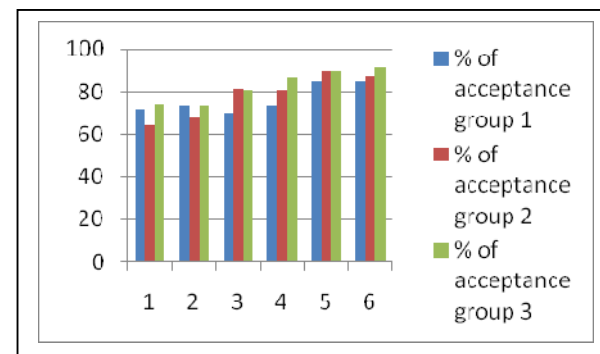
Methodology

The investigations were performed during six production series. The investigation was focused on the two types of breeding colonies: with presence of queen bee and without presence of queen bee. The colonies were divided into 3 sub-groups according to the number of introduced cells for royal jelly production. Group 1 with 20 cells; group 2 with 40; group 3 with 60.

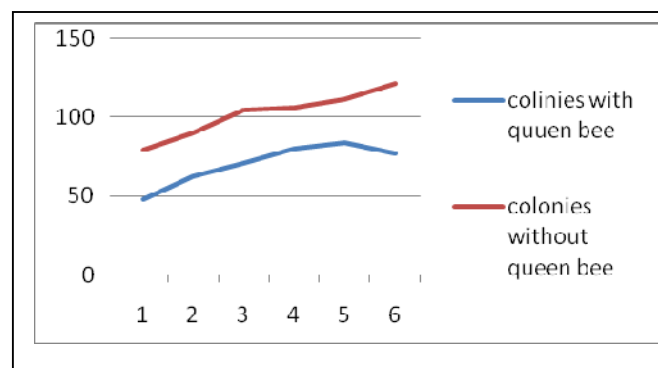
Results



Percentage of acceptance of introduced larvae in bee hives with Queen bee



Percentage of acceptance of introduced larvae in bee hives without Queen bee



Average quantity in grams per colony of produced royal jelly during 6 production series