

THE PERSPECTIVES OF

TECHNOLOGICAL DEVELOPMENT

BEEKEEPING.

INDUSTRIAL BEEKEEPING.

D. Petrov. Ukraine.

$$\mathbf{E} = \mathbf{f}(\mathbf{C})$$

E – evolution;

C – complexity.

$\bar{C} \rightarrow \infty$ - complexity.

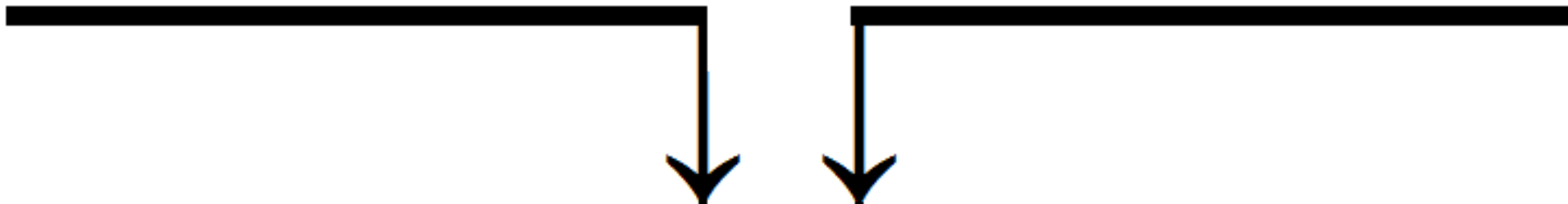
$$\frac{dC}{dt} > 0$$

$$\mathbf{D} = \mathbf{f}(\mathbf{C})$$

D - development;

$\bar{\mathbf{C}} \rightarrow \infty$ - complexity.

$$\frac{dC}{dt} > 0$$

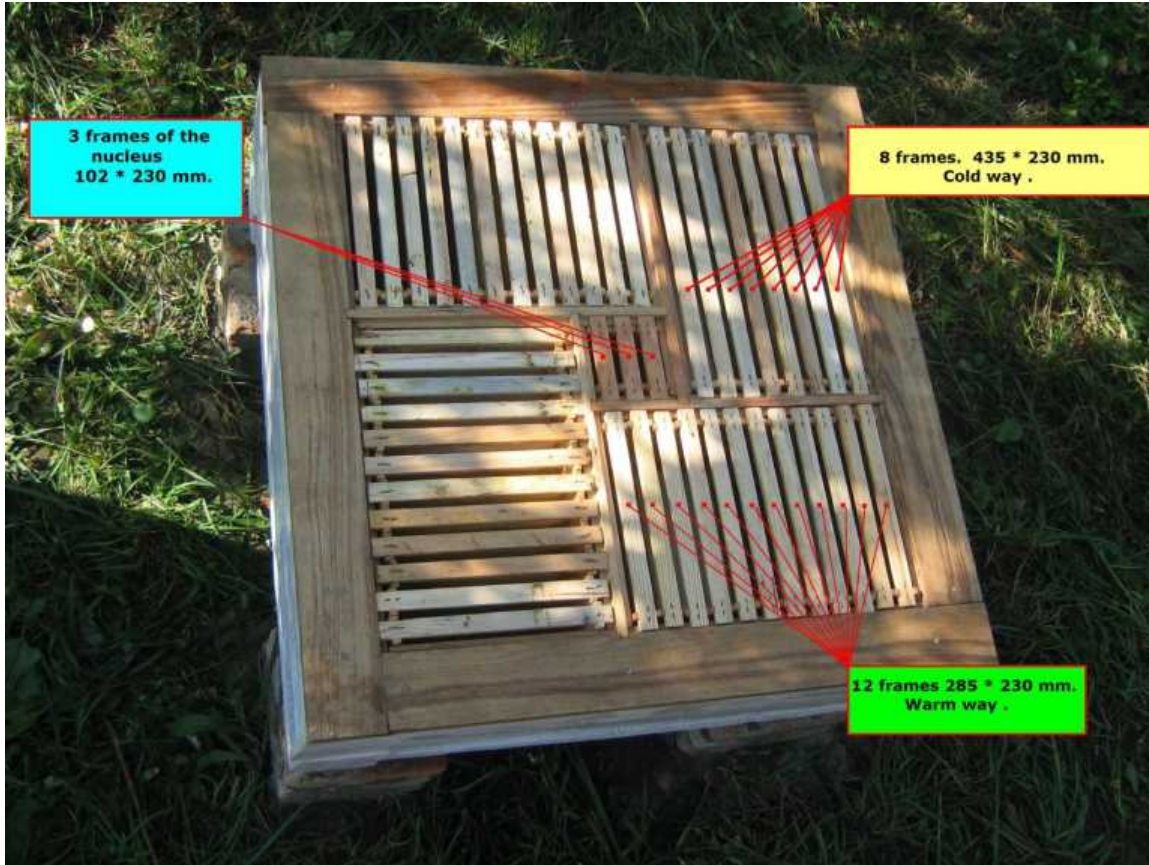
$$\mathbf{E} = \mathbf{f}(\mathbf{C}) ; \mathbf{D} = \mathbf{f}(\mathbf{C})$$


$$\frac{d\mathbf{C}}{dt} > 0$$

$\bar{C} \rightarrow \infty$ - complexity.



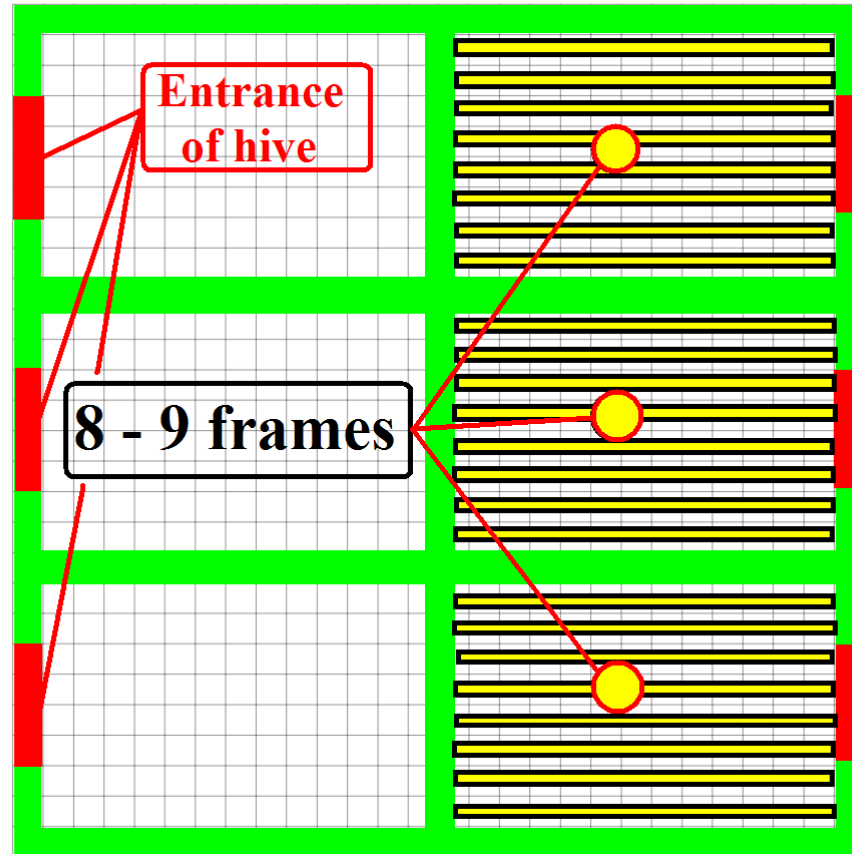
**The basis of
micro-Apiary.**



3 frames of the nucleus
102 * 230 mm.

8 frames, 435 * 230 mm.
Cold way .

12 frames 285 * 230 mm.
Warm way .



Super honey chamber



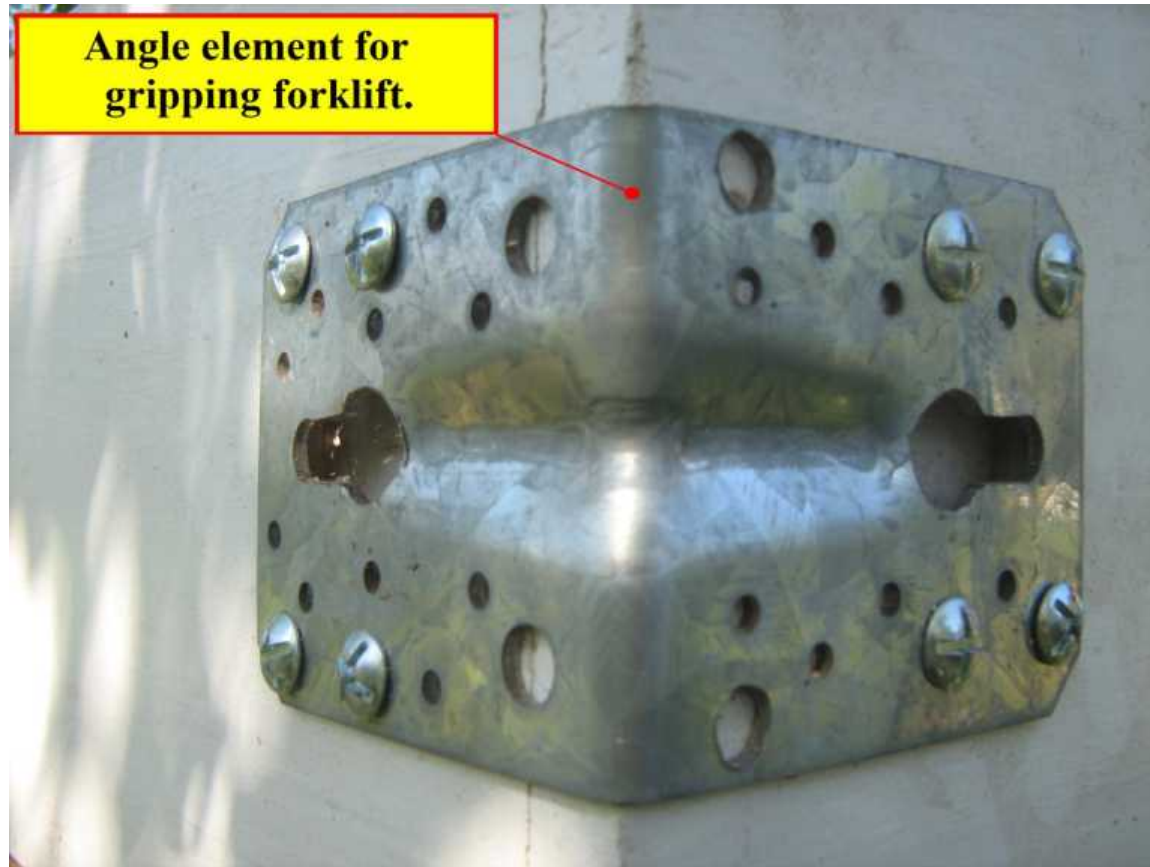


Petrov's micro-apiary is prepared to the wintering.

**Under the stiffening angel
a hollow is milled .**



Angle element for gripping forklift.



***Thank
You!***

www.mikropaseka.com.ua

E. mail: outsider2009@i.ua

Mobile: +38 099 27 36 702